



Thresholds for Subregional Coordination

Presentation to BayCAN

February 20, 2020

Rohin Saleh

Alameda County Flood Control District, CHARG BAFPAA Subcommittee

Climate change presents one of the biggest, most complex **technical** and **political** challenges in our lifetime and for future generations.

The sustainability of the infrastructure we manage, the communities we protect, and our credibility as government agencies hinges upon how we respond to this challenge.

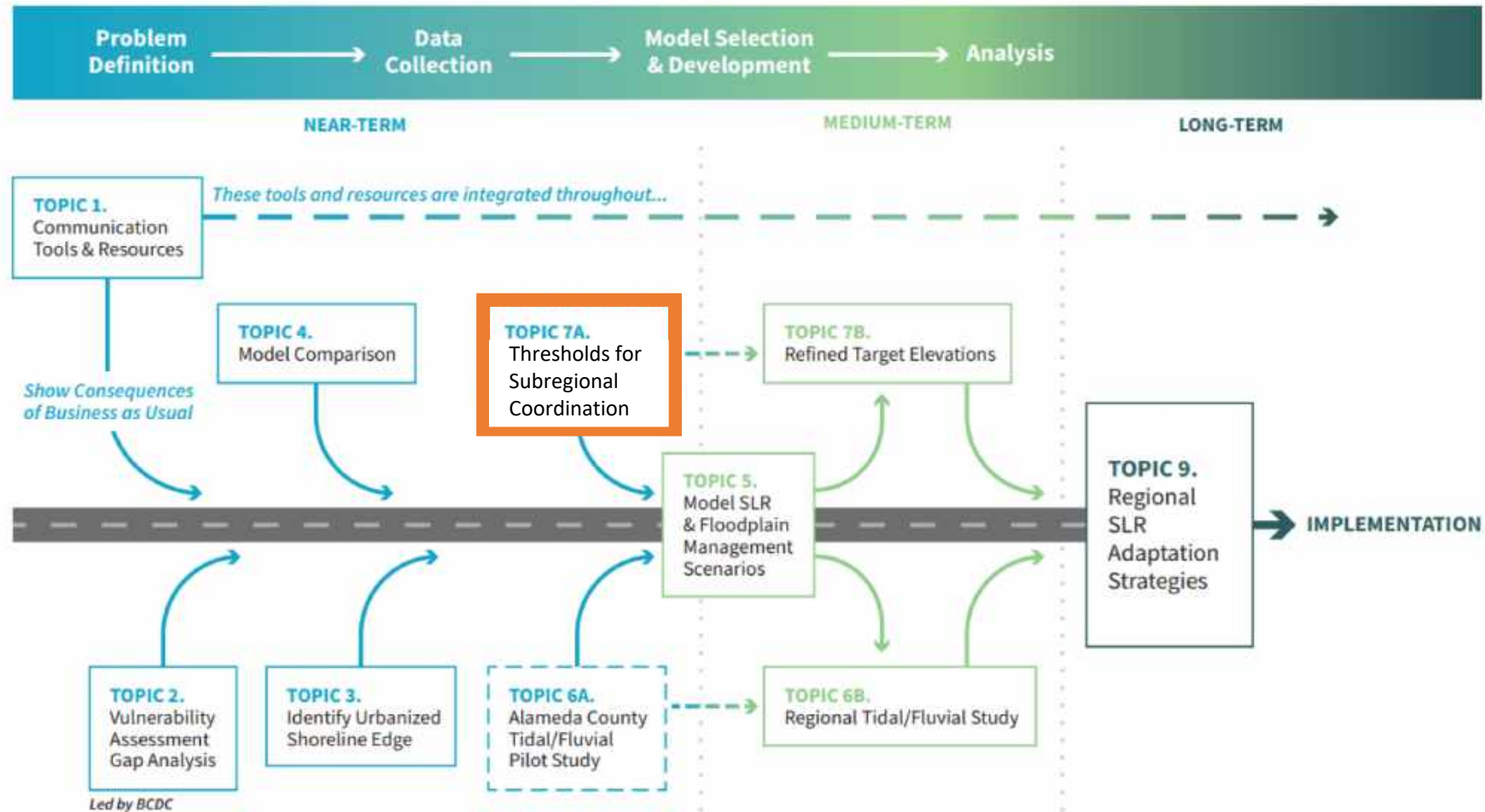
The regional nature of sea level rise impacts, especially in sheltered water environments such in SF Bay, requires generally independent jurisdictions to ***work jointly*** toward a one Bay set of solutions.

Why CHARG?

2



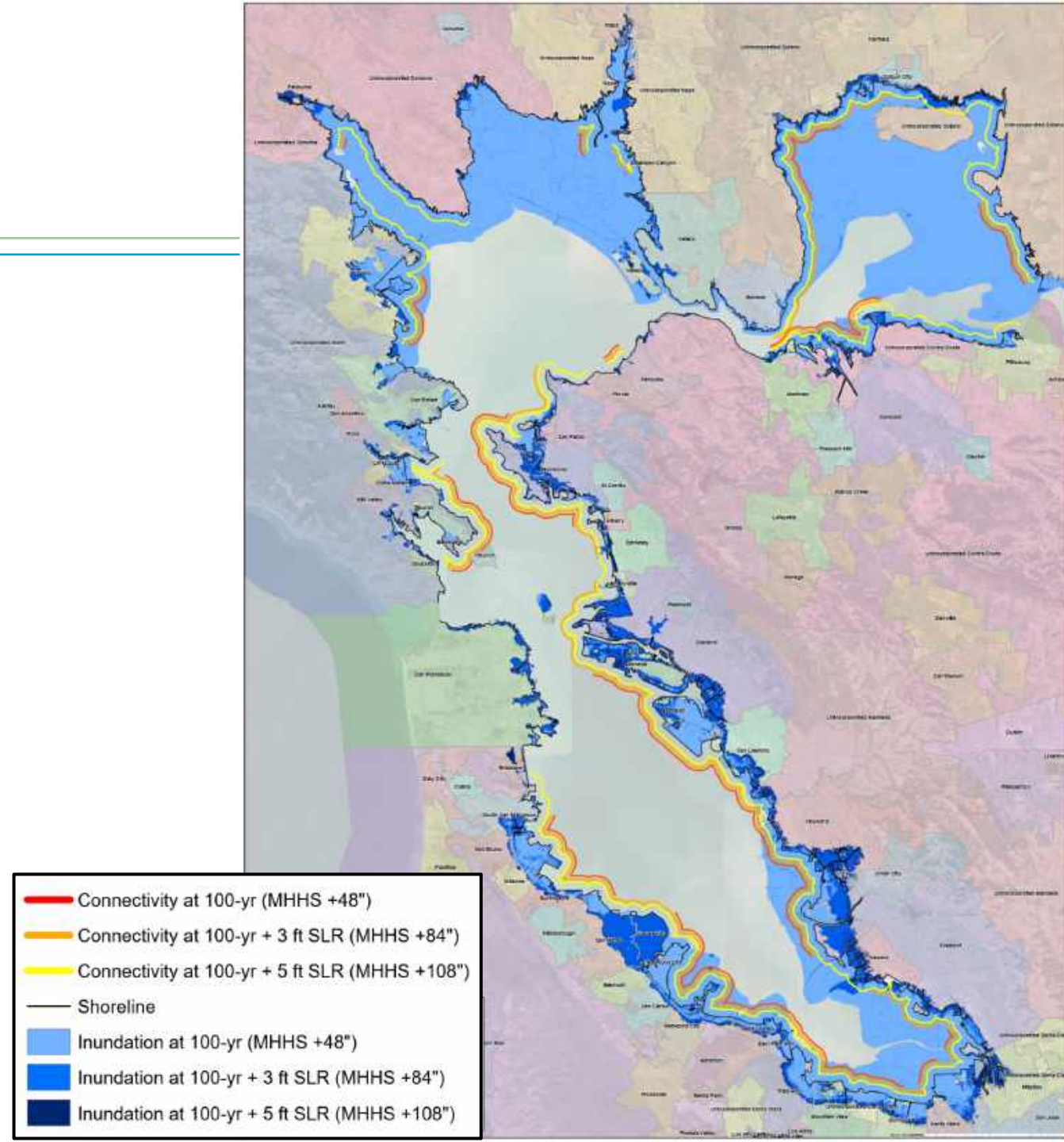
Technical Priorities Road Map



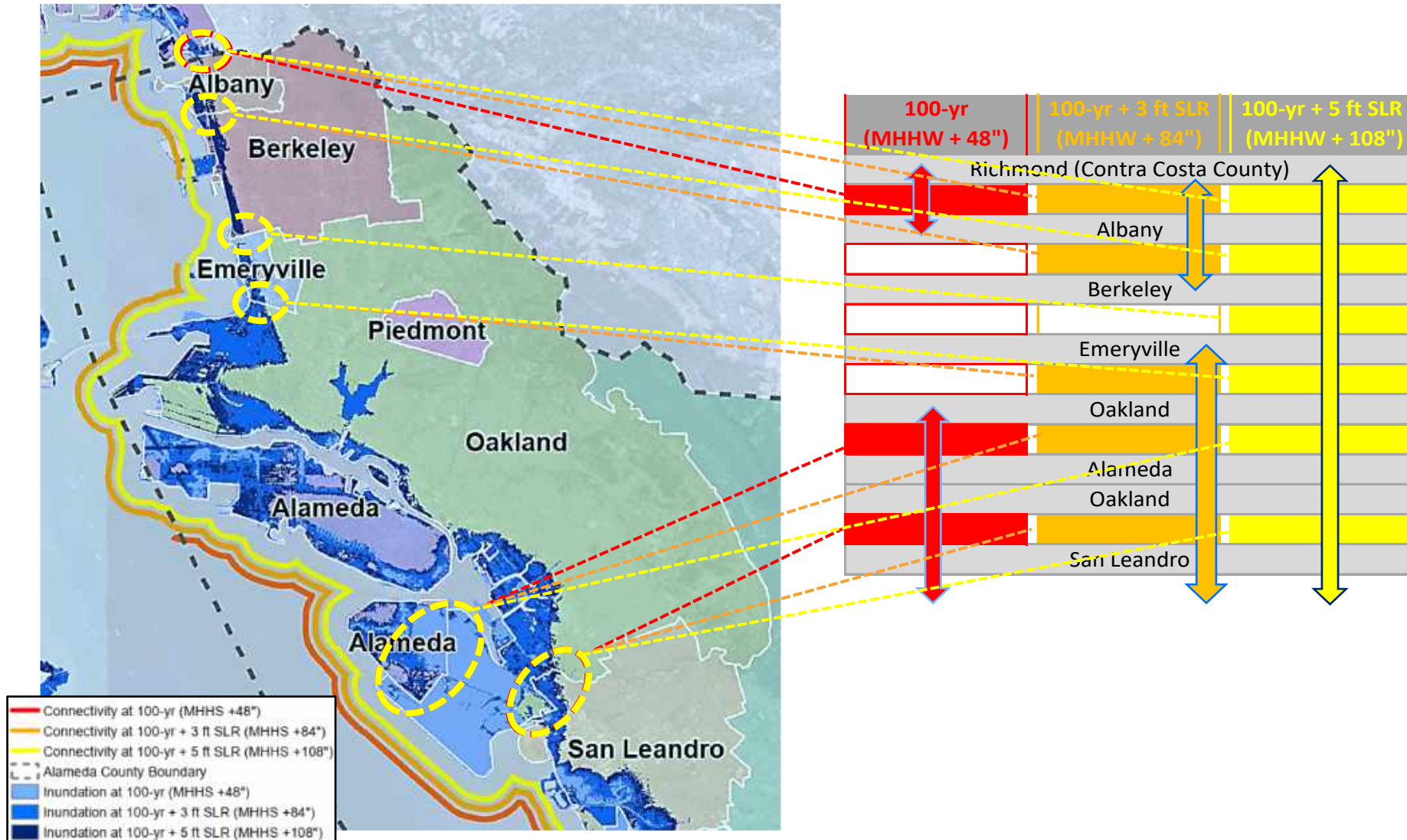
SLR Flood Connectivity Between Jurisdictions

■ Methodology

- Used FEMA S.F. Bay Regional model
 - 100-yr storm surge
 - 100-yr + 3 ft SLR
 - 100-yr + 5 ft SLR
- Assign urbanized shoreline edge to city boundaries
- Identify connected boundaries where inundation depths exceed one foot for more than 200 linear feet of city-to-city boundary



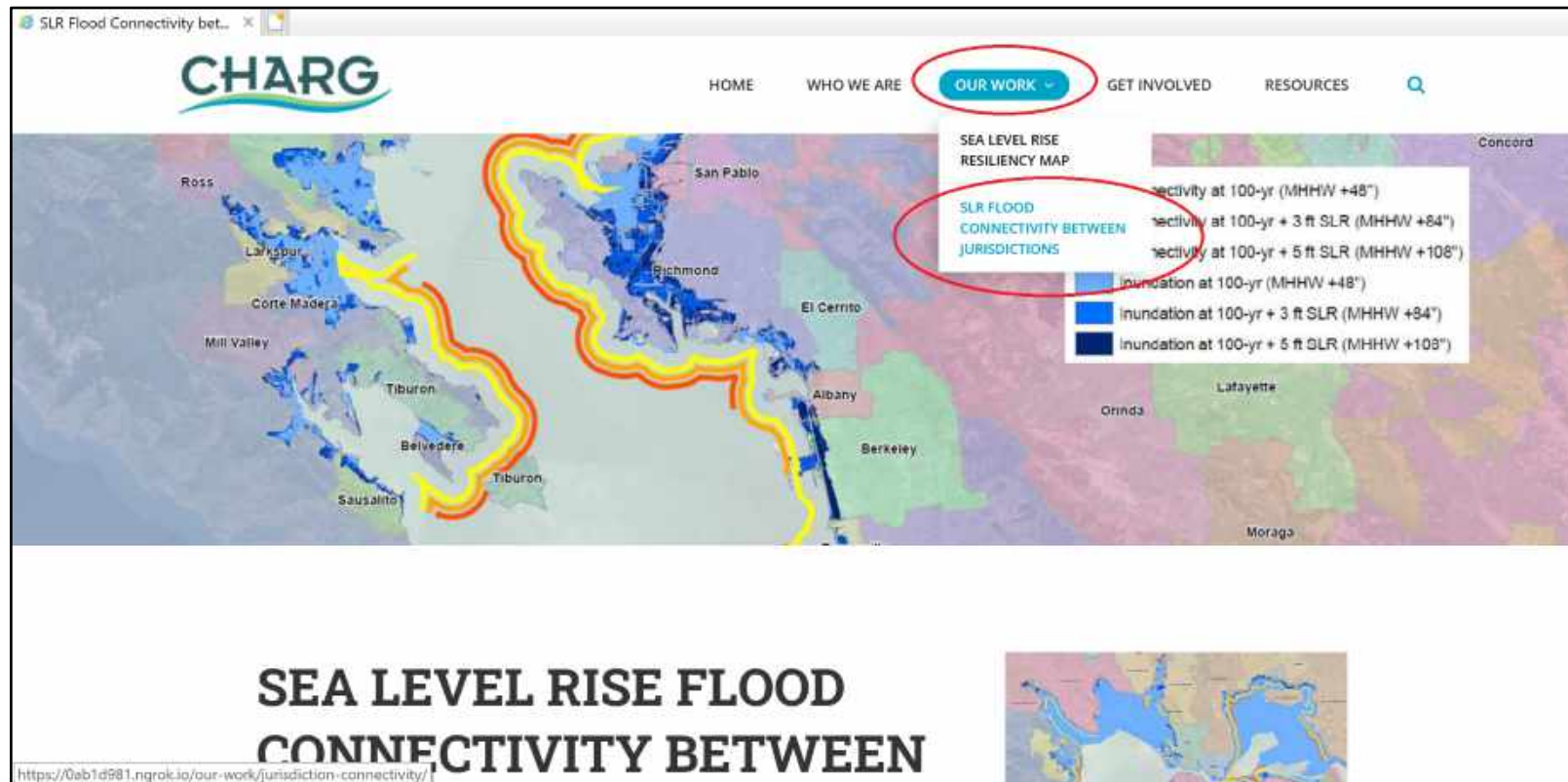
SLR Flood Connectivity Between Jurisdictions Northern Alameda County



Maps Now Available Online

1. Visit SFBayCHARG.org
2. Click dropdown menu under “Our Work”
3. Click “SLR Flood Connectivity Between Jurisdictions” or visit:

<http://www.sfbaycharg.org/our-work/jurisdiction-connectivity/>



Questions?

